

VISUAL
APPROACH
CHART

AD ELEV 784FT
HEIGHTS RELATED TO
THR RWY09 ELEV 765FT
VAR 5° E (2020)

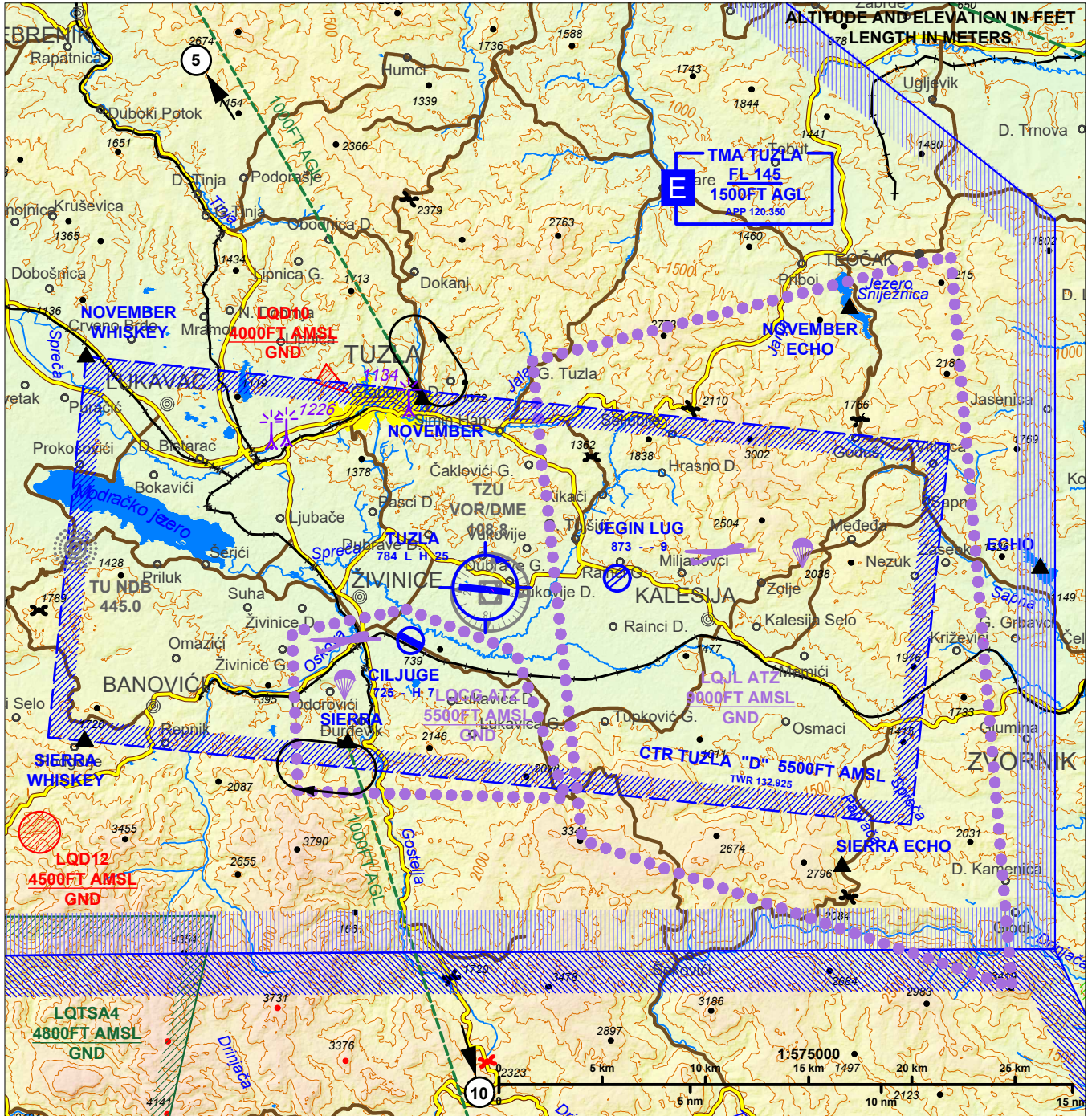
APP 120.350
TWR 132.925

FIC 135.575
ATIS 133.825

TA
10000FT

ARP COORD
44° 27' 31.15" N
018° 43' 29.21" E

TUZLA (LQZT)



REPORTING POINTS	COORDINATES	DEFINITION
NOVEMBER WHISKEY	44° 33' 39" N 018° 29' 25" E	Coal pit Lukavac
NOVEMBER	44° 32' 27" N 018° 41' 44" E	Football stadium
NOVEMBER ECHO	44° 34' 45" N 018° 57' 22" E	Lake Snježnica
ECHO	44° 27' 52" N 019° 04' 15" E	Lake Crveno (industrial landfill, artificial lake of red colour)
SIERRA ECHO	44° 20' 08" N 018° 56' 53" E	Monastery Paprača
SIERRA	44° 23' 30" N 018° 38' 55" E	South part of coal pit Đurđevik
SIERRA WHISKEY	44° 23' 36" N 018° 29' 18" E	Lake Podgorje

Two way radio communication mandatory.
Contact Tower at or before reporting point.
For latest informations consult relevant publications and NOTAMS

Special VFR minima:
VIS ≥ 1500M (FIXED WINGS), 800M (HEL); ceiling ≥ 500FT

CAUTION:
Power lines and obstacles are not shown

ATTENTION:
Bird concentration on and in the vicinity of RWY. Possibility of wildlife appearance in the vicinity of RWY early in the morning and late in the afternoon. Caution advised

CHG: ATIS added

THIS PAGE INTENTIONALLY LEFT BLANK